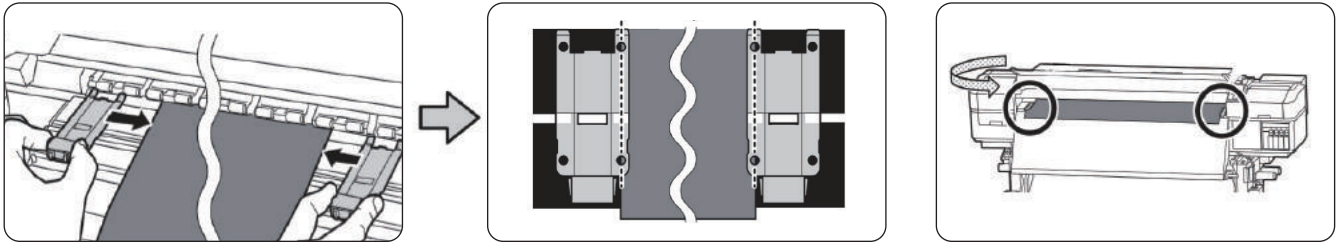


USER GUIDE

FLAT DOT SERIES [Matte,Glossy,Clear]

- 01 Recommend to store the products in original packaging.
- 02 Recommend to wear cotton glove all the time during the installation to avoid finger print on the surface.
- 03 Recommend to use media clamp to prevent head strike during the printing.



- 04 Recommended temperature when printing is as follows
Pre : 35~38°C / Platten : 40~42°C / After : Max
- 05 Recommend to adjust media suction value when having problem with head touches caused by media detachment.
- 06 Recommend to print with extra space above 5.0mm outside of printing area during the printing.
- Without the extra space, detachment may can be observed on the substrate after installation.



< Recommend >



< Not Recommend >

- 07 Recommend to do the lamination or installation after enough drying time when printing is completed.
- Recommended drying time : more than 24 hours
- 08 Recommend to adjust ink limit and printing speed to prevent blocking issue if using automatic take-up equipment.
- 09 In case of using additional dryer when printing with solvent ink, recommend to use ventilation type.
Do not recommend heating dryer.
- 10 When printing by latex printer, please set the proper printing condition to prevent deformation or overturn by drying heat.
- 11 When applying the media, recommend to clear the surface without the residues and not to apply water after installation.
- Recommend to test prior to use. Depending on the substrate, there will be some cases which water applying is required.

- 12** Recommend to use supplementary tape to outside edges to prevent the detachment after installation.



- 13** Recommend to use on the smooth surface such as glass.
- 14** When removing the media, please note that there may be some leftover residues depending on the substrate
- 15** If the substrate is painted surface, adhesive transference or paint removal may can be observed.
- 16** Recommend to use dryer on the substrate in the cold season to raise the temperature on the substrate.
If the temperature is low, the adhesion will be weaker.
- 17** When using lamination film, recommend to use cold type lamination film, not hot lamination film.
- 18** When using cold type PVC lamination film, recommend to use the film with following requirement
(contraction - MD : below 1.5mm, CD : below 1.0mm, based on FINAT FTM14)
- 19** Recommend to use PVC lamination film specified for outside uses when applying products outside.
- 20** Recommend to test prior to use